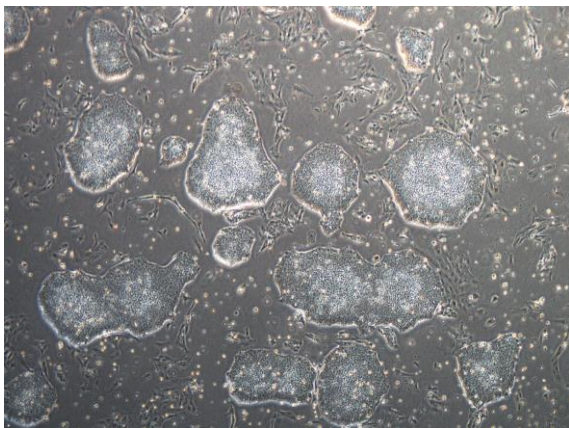
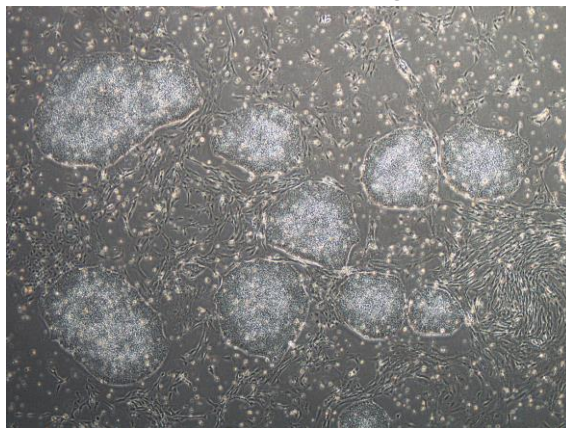


【 CiRA-j-1043 】 Morphology of iPSC colonies

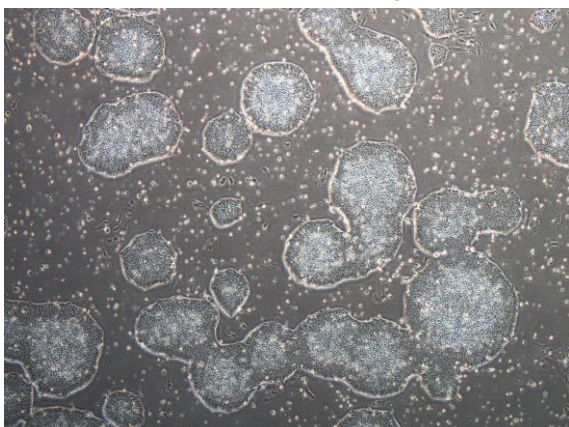
CiRA-j-1043-A: passage-2



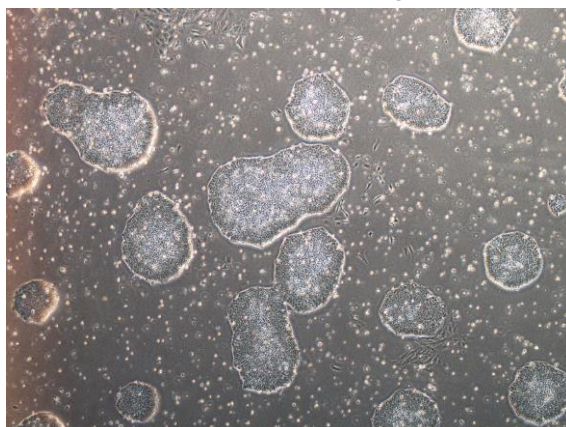
CiRA-j-1043-B: passage-2



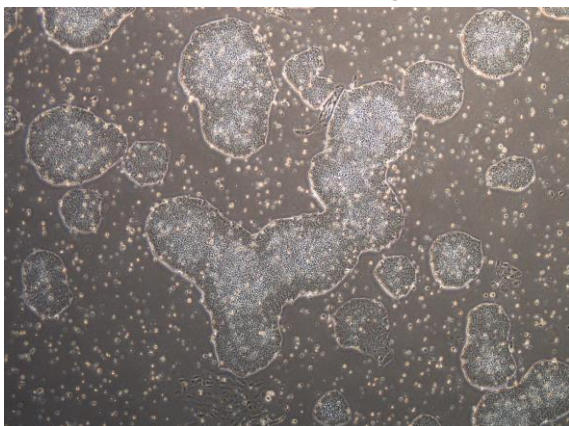
CiRA-j-1043-C: passage-2



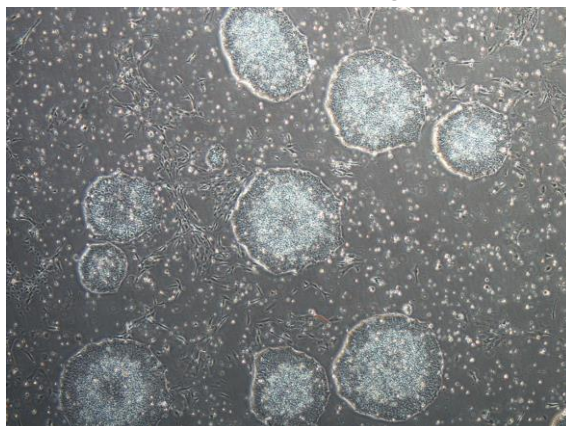
CiRA-j-1043-D: passage-2



CiRA-j-1043-E: passage-2



CiRA-j-1043-F: passage-2



(All images were captured at 4x magnification)